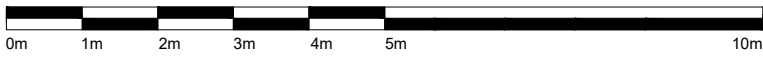


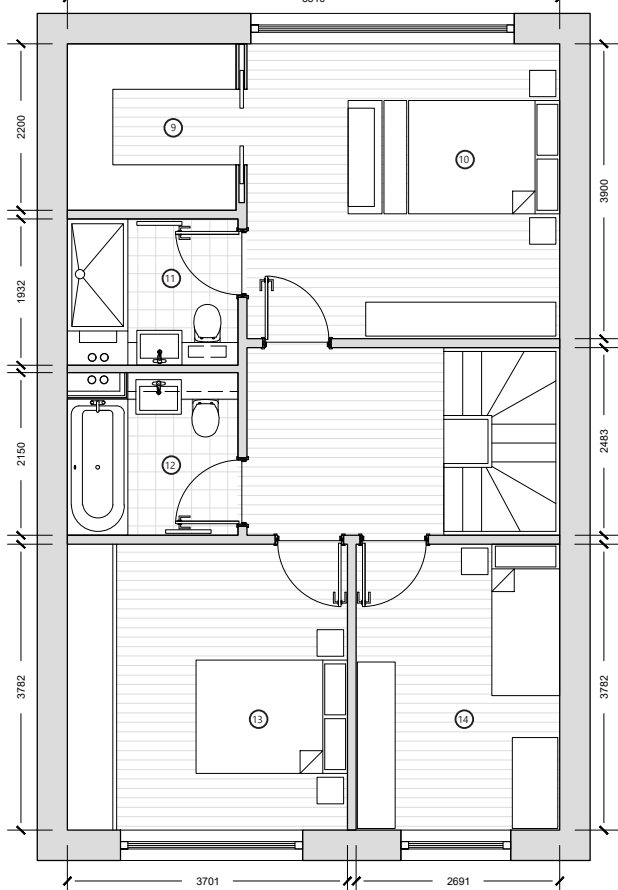
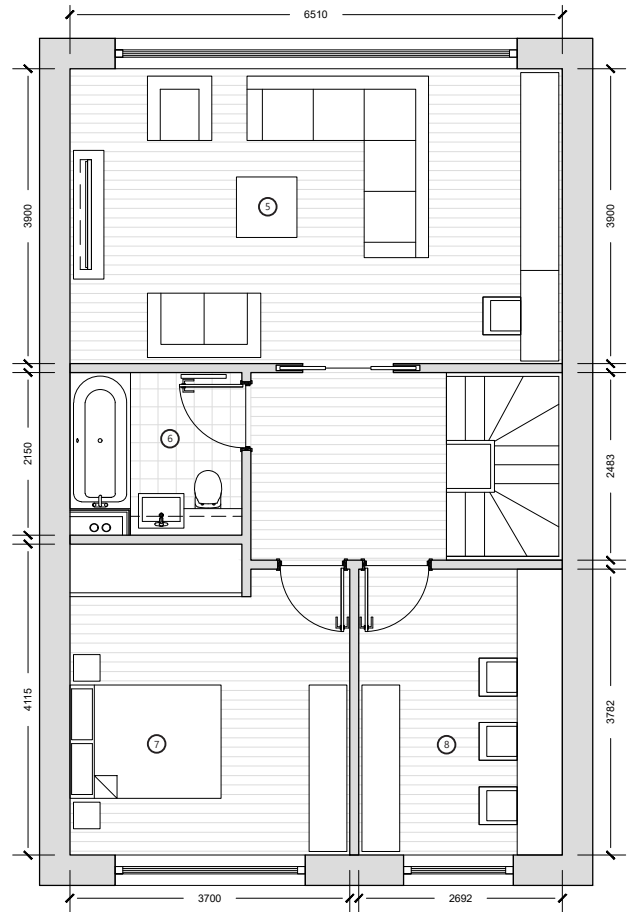
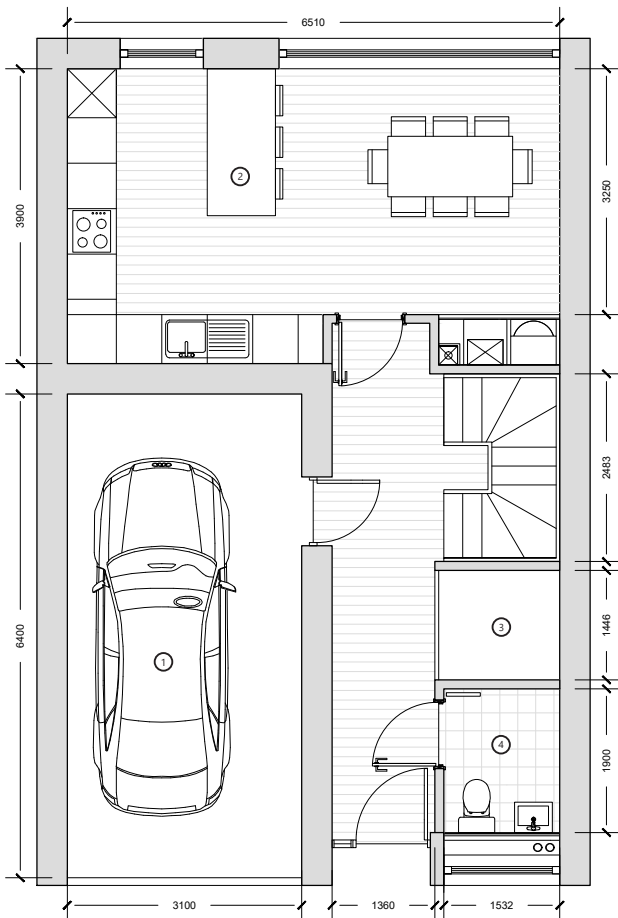
Bentayga House

counterbalance

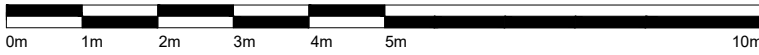


1:100 @A4

No. Bedrooms:	4B8P
Net GIA Area:	203.10m ² (Garage)
No. Floors	3



- 1 - Garage - 19.85m²
- 2 - Kitchen / Dining - 24.42m²
- 3 - Storage - 2.31m²
- 4 - WC - 3.41m²
- 5 - Living / Dining - 25.38m²
- 6 - Bathroom - 4.90m²
- 7 - Bedroom 04 - 14.70m²
- 8 - Study - 10.18m²
- 9 - Wardrobe - 4.90m²
- 10 - Bedroom 01 - 16.12m²
- 11 - En-suite - 4.35m²
- 12 - Bathroom - 4.85m²
- 13 - Bedroom 02 - 14.00m²
- 14 - Bedroom 03 - 10.17m²



1:100 @A4

No. Bedrooms:	4B8P
Net GIA Area:	203.10m2 (Garage)
No. Floors	3

Case Study House 4B-001-Bentayga House

The Bentayga house is a pure form where performance, comfort and luxury family living meet in perfect balance. It seamlessly fuses a modern design with a suite of innovative technologies to create a high end mews house that excels in any environment. This house is bold and makes a clear statement of intent that this family home helps create extraordinary journeys for its inhabitants. This house has been designed as a contemporary image of the mews house with the hatched areas showing ideal zones for windows.

Ground Floor Plan

This ground floor is designed to accommodate a single story garage space to park your Bentayga off the street, safely housed within your home. At the entrance a discreet cloakroom and spacious storage takes guests through a spacious lobby area straight into the kitchen/dining area.

A continuous elegant stair runs up the whole building mid-way ones approach, effortlessly connecting all the rooms and spaces of the house. The kitchen/dining open area is flooded with natural light, providing a flexible indoor outdoor environment with the rear garden. The concept of family dining is further enhanced by the dining room carefully positioned off the kitchen area and spatially separated via the floating countertop/breakfast bar.

1st Floor Plan

The first floor celebrates family life through a generous living room which contains space for all members of the family along with an ambitious library and study area.

The midlevel is complemented by a guest room or additional bedroom space for the family. To avoid running up or down for toilet breaks during family film nights there is a conveniently located bathroom with a shower/bath for guests to use comfortably without intrusion on family commodities and spaces on the second floor.

As homes become increasingly places of work and study, a dedicated home office for parents at this levels allows for clear separation of work/sleep areas. Alternatively this space could serve as a children study to complete homework after school or study remotely if required.

2nd Floor Plan

The second floor contains the core family quarters with a generous master en-suite bedroom containing a walk in wardrobe and spacious dressing desk area. The master bedroom also benefits from generous views towards the rear garden.

To complement this arrangement a double and a single bedroom, serviced by a family bathroom are also housed on this floor. This layout is ideal for a family with three young children and potentially an older child or grandparent that could sleep on the first floor.