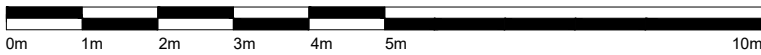


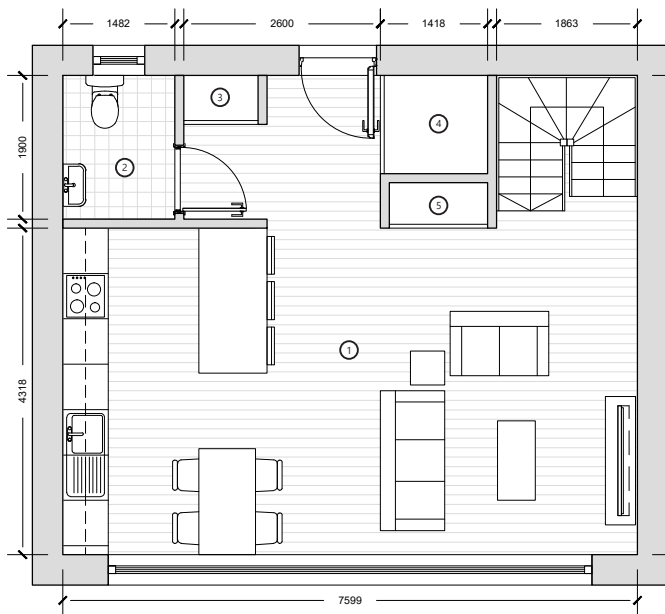
# Serra House

counterbalance

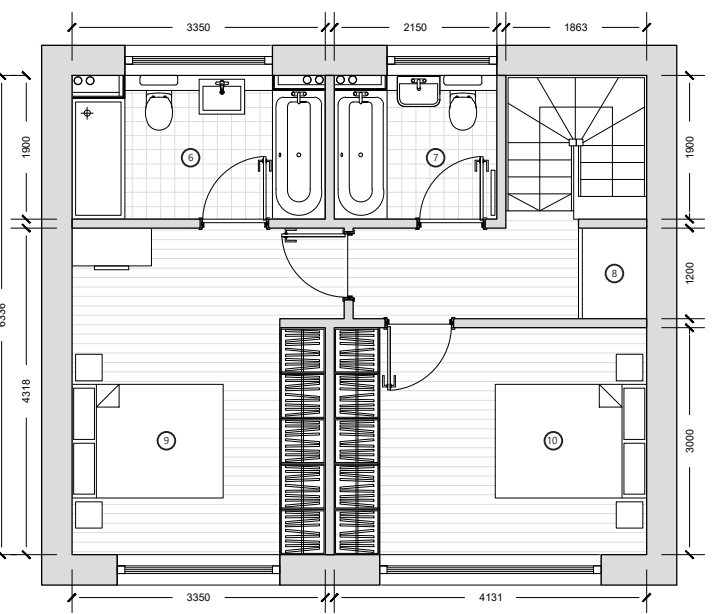


1:100 @A4

<b>No. Bedrooms:</b>	2B4P
<b>Net GIA Area:</b>	96.25m <sup>2</sup> (No Garage)
<b>No. Floors</b>	2



Ground Floor Plan



1st Floor Plan

- 1 - Living / Kitchen / Dining - 32.80m<sup>2</sup>
- 2 - WC - 2.80m<sup>2</sup>
- 3 - Storage - 0.60m<sup>2</sup>
- 4 - Storage - 1.75m<sup>2</sup>
- 5 - Storage - 0.70m<sup>2</sup>
- 6 - En-suite - 6.36m<sup>2</sup>
- 7 - Bathroom - 4.08m<sup>2</sup>
- 8 - Storage - 1.00m<sup>2</sup>
- 9 - Bedroom 01 - 14.70m<sup>2</sup>
- 10 - Bedroom 02 - 12.40m<sup>2</sup>

## Case Study House 2B-003-Serra

The house plan is a compact, two-storey dwelling with a clean, rational layout. Its organisation and stylistic cues can be compared to its namesake known for its clean lines, balanced proportions, and understated elegance. It has a geometric clarity, long horizontal lines, and balanced side proportions. Its form expressed quiet luxury rather than unnecessary ornamentation.

The ground floor prioritises openness and flow, creating a clean forward-moving sequence from entry to Kitchen, dining and living area which benefits from uninterrupted, linear sightlines. The kitchen located along the left wall near the entrance, designed as a linear workspace with ample counter surface, integrated cooktop, oven,

sink, and overhead storage. Its close proximity to the dining area supports fluid daily use and entertaining. The living space features a sofa, lounge chair, coffee table, and media wall and creates a relaxed, connected atmosphere for family activities.

The plan exhibits symmetry, balance, and clarity—especially on the upper floor, where the bedrooms are mirrored around a central wardrobe and corridor. Both rooms benefit from clean, rectangular layouts that allow flexible furniture arrangements. Two full bathrooms upstairs reflect higher-end living standards, unusual in 2 bedroom homes but not the Serra as it adds premium features to a compact footprint. Overall, the design is practical, contemporary, and well-suited for small families, couples, or shared occupancy.