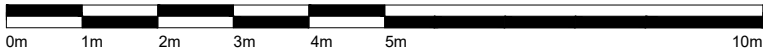


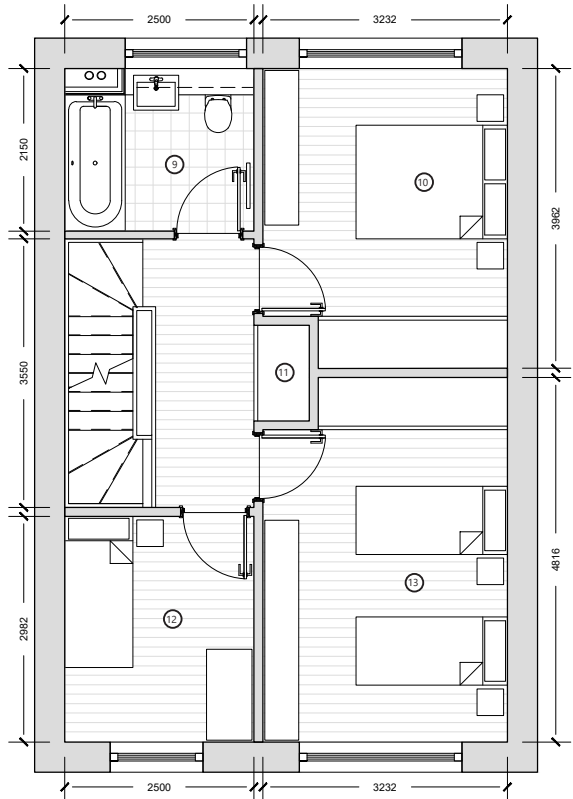
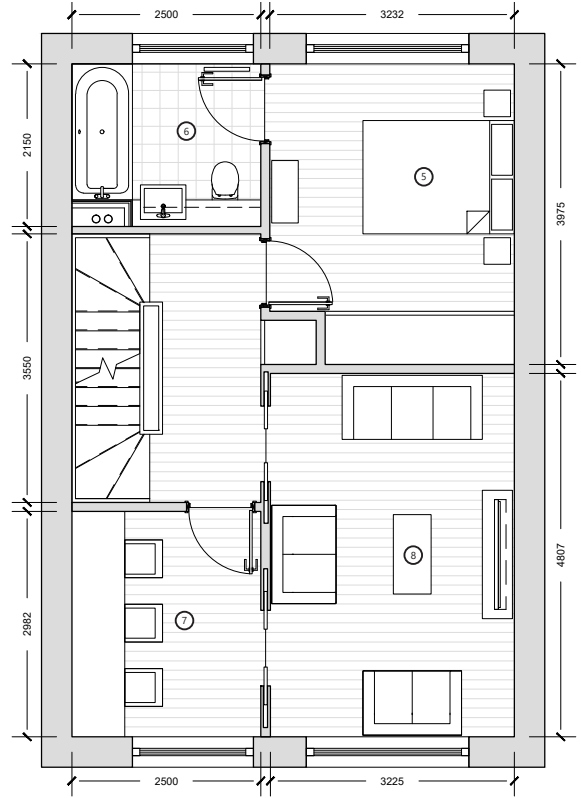
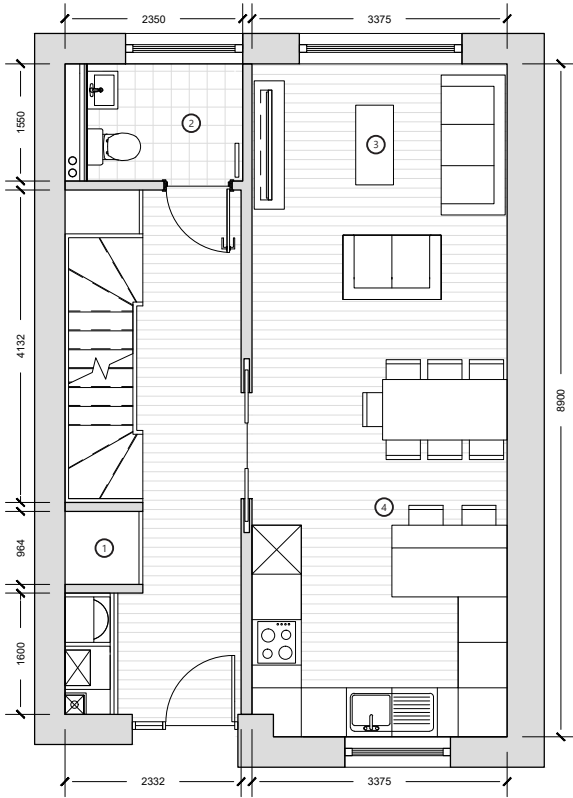
# Panamera House

counterbalance



1:100 @A4

<b>No. Bedrooms:</b>	4B7P
<b>Net GIA Area:</b>	155.25m <sup>2</sup> (No Garage)
<b>No. Floors</b>	3



- 1 - Storage - 0.95m<sup>2</sup>
- 2 - WC - 3.65m<sup>2</sup>
- 3 - Living - 13.20m<sup>2</sup>
- 4 - Kitchen / Dining - 16.82m<sup>2</sup>
- 5 - Bedroom 01 - 12.33m<sup>2</sup>
- 6 - En-suite - 5.35m<sup>2</sup>
- 7 - Study - 7.50m<sup>2</sup>
- 8 - Living - 15.50m<sup>2</sup>
- 9 - Bathroom - 5.35m<sup>2</sup>
- 10 - Bedroom 03 - 12.30m<sup>2</sup>
- 11 - Storage - 0.85m<sup>2</sup>
- 12 - Bedroom 04 - 7.50m<sup>2</sup>
- 13 - Bedroom 02 - 15.05m<sup>2</sup>



1:100 @A4

<b>No. Bedrooms:</b>	4B7P
<b>Net GIA Area:</b>	155.25m <sup>2</sup> (No Garage)
<b>No. Floors</b>	3

## Case Study House 4B-002-Panamera House

The Panamera house provides a stunning combination of comfort and performance, streamlined to focus on popular features of the new world of work/life balance in a family home. It has generous amounts of space for a growing family with customisable living/working arrangements to provide a sanctuary for all members of the family.

It is a highly efficient contemporary layout which allows for the modern family to arrange business meetings at home while the children are being taught remotely away from school. At the weekend it provides a getaway from your workspace to enjoy family life. There is plenty of space for everything you need, whether it's a Saturday in with the family or the extended family visiting. This house has been designed to be used in a row of terraces with the hatched areas showing ideal zones for windows.

### Ground Floor Plan

Upon entering the home you have a spacious entrance lobby allowing you to greet guests with ease. The lobby provides a large amount of storage space and access to a discreetly located toilet at the end.

As you move through the house you are confronted by a continuous elegant stair which runs up the whole building effortlessly connecting all the rooms and spaces of the house. The kitchen provides a large amount of worktop space whilst providing a view out towards a front garden. It also provides a small countertop for informal dining space for two people. Beyond the kitchen, the dinning space within the centre of the room becomes the heart of the family.

The informal living/family space on the ground floor provides a break away space for adults or children from the living room space at 1st floor, alongside a space to entertain guests at ground floor next to your garden.

### 1st Floor Plan

The 1st floor contains a master bedroom with access to an en-suite bathroom along with built in wardrobe storage. The position of this bedroom allows for parents to have a physical connection with the access to the bedrooms on the top floor giving a sense of security and protection for your children.

A larger living/drawing room for the whole family is provided on the 1st floor giving easy access to all the family, especially parents who stay up later for a relaxing glass of wine while the children are sleeping.

As home working becomes more common, it is important that there is dedicated space for parents and children away from their bedrooms, living or dining space which is proven to have a negative impact on mental and physical health. This floor provides a study space which can open onto the living space, giving the option of overlooking children within the living room space or hiding away to focus.

### 2nd Floor Plan

This floor is for the children of the family providing space for up to 5 children but more commonly and comfortably for 3. This allows for the third bedroom on the floor to be used as a dedicated study with storage space to help improve the focus and productivity of the children in the family creating a separation between play/sleep and school work.

There is a family bathroom on this floor to help busy parents get their children ready for bed or school, avoiding the need to travel up and down the stairs. It also allows older children a level of privacy and independent living by having their own bathroom.

The bedrooms have been designed to have the possibility of having either two single beds or a single double bed for older children.