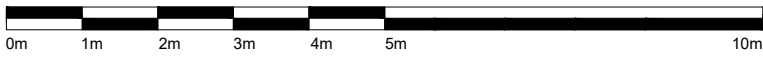


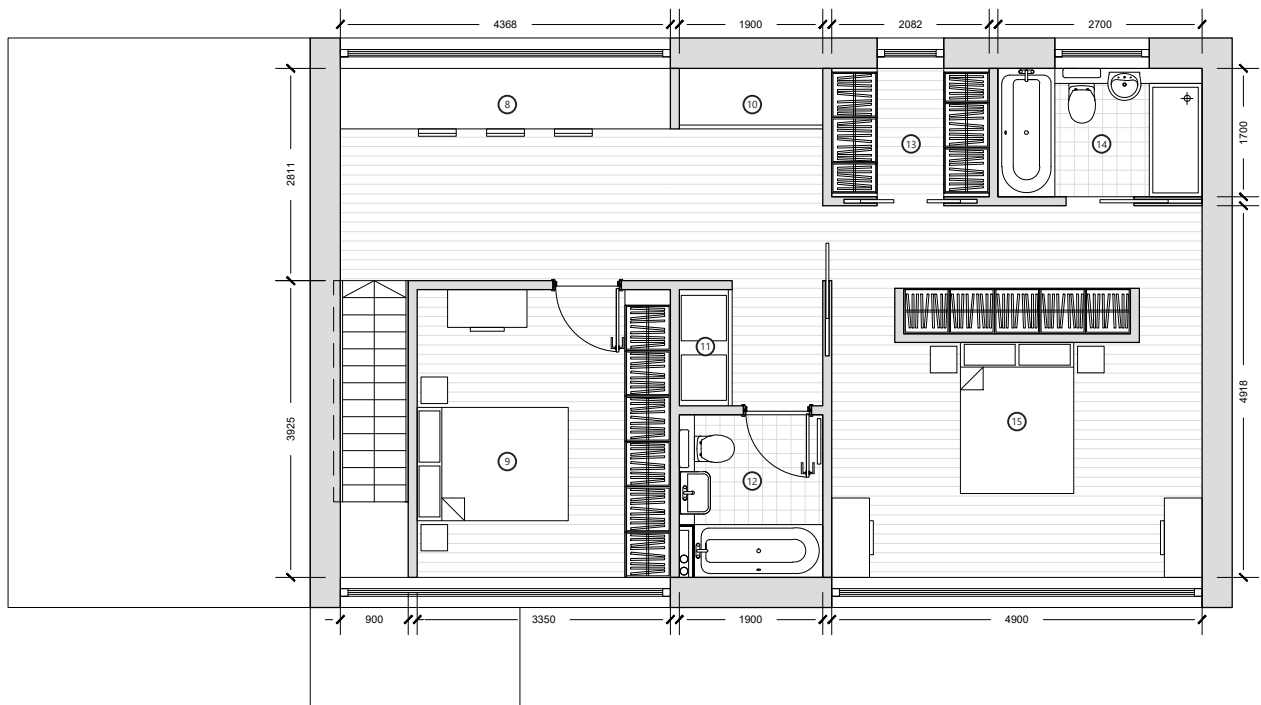
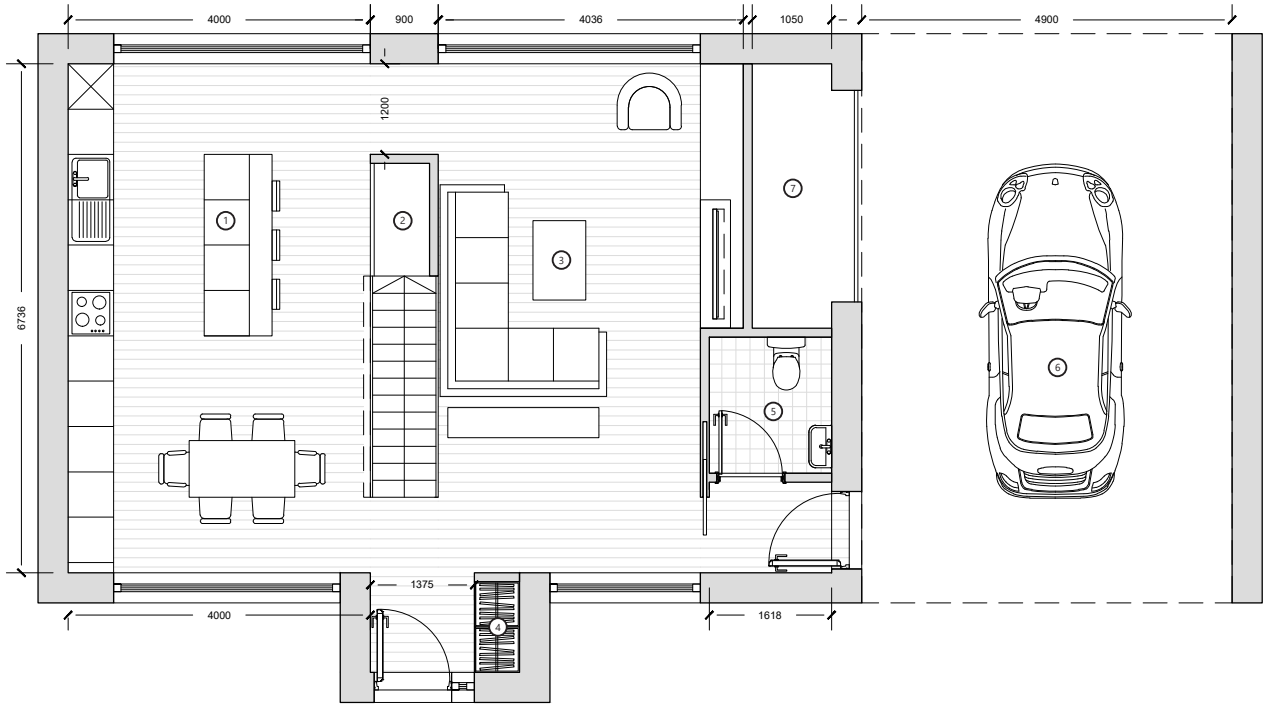
Eldorado House

counterbalance



1:100 @A4

| | |
|----------------------|-------------------------------|
| No. Bedrooms: | 2B4P |
| Net GIA Area: | 147.50m ² (Garage) |
| No. Floors | 2 |



- 1 - Kitchen/Dining - 27.00m²
- 2 - Storage - 1.10m²
- 3 - Living - 26.42m²
- 4 - Storage - 0.72m²
- 5 - WC - 2.91m²
- 6 - Carport - 37.00m²
- 7 - Storage - 3.67m²
- 8 - Study - 12.27m²
- 9 - Bedroom 02 - 12.70m²
- 10 - Storage - 1.40m²
- 11 - Laundry - 1.00m²
- 12 - Bathroom - 4.00m²
- 13 - Wardrobe - 3.53m²
- 14 - En-suite - 4.58m²
- 15 - Bedroom 01 - 24.00m²

Case Study House 2B-008-Eldorado House

Picture this home as a long-bodied cruiser of space and light, a two-story dwelling drawn with the quiet swagger of a Eldorado, where every room feels spacious and comfortable.

You enter into a broad, open living realm, the kitchen sits to the left, clean, linear, confident. Its island and dining table form a pair of polished accents, inviting gatherings the way a wide leather bench seat invites passengers. The living area flows ahead without resistance, a lounge arranged like a cruising cabin—sofas aligned with effortless intent, the plan breathes in long, horizontal lines.

At the right flank, a compact powder room is tucked away yet easy to reach. Beyond it, the carport lies open, a quiet nod to the machine that once defined American elegance. A central staircase rises in the middle, a vertical echo of a classic tailfin, not sharp or showy, but

subtly guiding you upward toward the more intimate rooms above.

The primary bedroom unfurls to the left, broad and calm, with storage lining its edge. The ensuite is placed with an elegant sense of ceremony, its fixtures arranged like instruments on a well-crafted dash, each one where the hand expects it. On the opposite side, another expansive room stretches outward, a flexible space that could be a second bedroom, studio, or retreat. Between the two rooms lies a shared bathroom, a quiet interlude.

This home is drawn in lines that glide, planned in proportions that drift forward with elegant certainty, a living space that doesn't shout, but instead moves with the confident calm of a land yacht built for unhurried journeys. A house that, like the Eldorado, isn't just designed to be lived in, but to be experienced.