

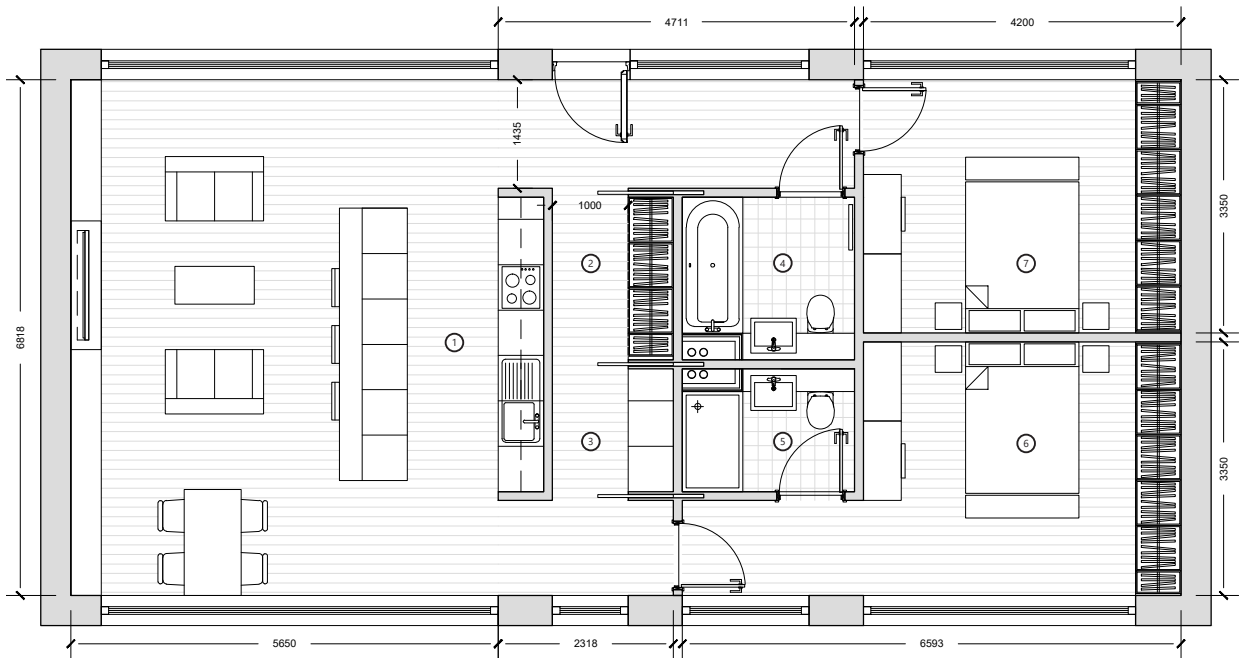
Healey House

counterbalance



1:100 @A4

No. Bedrooms:	2B4P
Net GIA Area:	100m2 (No Garage)
No. Floors	1



- 1 - Living / Kitchen / Dining - 38.50m2
- 2 - Storage - 1.30m2
- 3 - Storage - 1.00m2
- 4 - Bathroom - 4.90m2
- 5 - En-suite - 3.70m2
- 6 - Bedroom 01 - 17.00m2
- 7 - Bedroom 02 - 14.00m2

Case Study House 2B-002-Healey House

This home stretches gently from end to end, a single, flowing line of living—a place where everything rests on one level, calm and unhurried. You enter near the centre, stepping into a quiet pocket of space where the house seems to pause, inviting you to follow. Ahead, the main living area opens in one generous sweep—kitchen, dining, and lounge gathered together.

The long island stands at the heart of it all, steady and grounding, a place for morning coffee, evening sketches, or conversations. The dining table sits by the window, bathed in daylight, while the sofa settles into its corner, a haven for music, reading or thinking. Beyond this open expanse, the private rooms line up quietly in a row.

Two bedrooms rest side by side, each a retreat where ideas can settle, where rest can unfold, where the hush of the evening feels like part of the design. Between them, the bathroom becomes a small sanctuary, a tidy laundry nook, and a thoughtful storage space stand nearby, quietly supporting the rhythm of everyday life.

The whole home carries a certain spirit—clean lines, a sense of purposeful simplicity—that subtly recalls an Healey: not flashy, but beautifully considered, shaped for people who value feeling over fuss, clarity over clutter, and the pleasure of well-made things. This is a home for an artist, a designer, a young professional— who wants light, openness, and a space that meets their imagination. Modest yet expansive, thoughtful yet effortless, it is a single-storey dwelling that unfolds like a calm, sunlit page waiting to be filled.